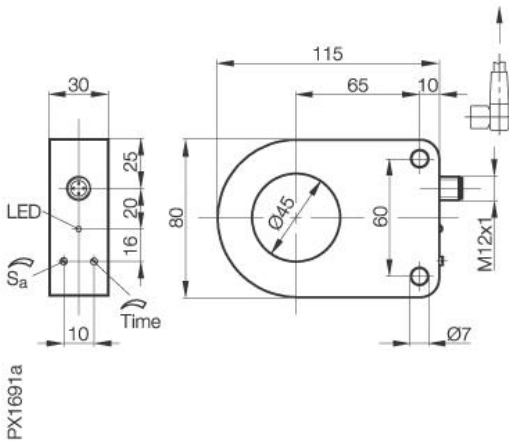


Inductive Sensors
BES IKV-045.23-G-Z-S4
80 x 115 x 30
normally-open
Sn=45mm



Common Data

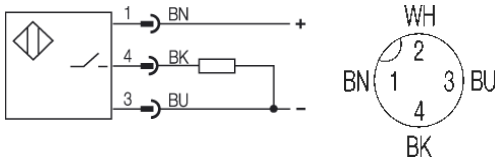
Product name	Ring Proximity Sensor
Rated operating distance Sn	45mm
Function indication	yes
Ambient temperature range	-25...+70°C
Polution Degree	3

Mechanical Data

Measurements BxHxT or DxT	80 x 115 x 30mm
Housing material	Plastic
Material of sensing face	Plastic
Degree of protection	IP65IP
Connection	Connector S4 (M12)
Schock: Halfsinus, 30 gn, 11ms	
Vibration: 55 Hz, 1mm Amplitude, 3 x 30 Minutes	

Electrical Data

Current type	DC
Wiring	3-Wire
switching function	normally-open
Output signal	PNP
Rated operational voltage	24 DCV
Rated operational current	200mA
Supply voltage	10...30 DCV
Ripple	≤ 15%
Rated supply frequency	DChz
No-load supply current	≤ 10/≤ 10mA
Off-state current	-µA
Voltage drop	≤ 2.0/-V
Short circuit protection	yes
Protected against polarity reversal	yes



Utilization categories
 Insulation class

DC 13

Datasheet number:

Definitions see general catalog.
 If not otherwise noted, ratings according to
 IEC 60947-5-2 (DIN EN60947-5-2)

Balluff GmbH
 Schurwaldstrasse 9
 73765 Neuhausen a.d.F.
 Phone (07158) 173-0 Fax (07158) 5010

Datenblatt by CD-ROM - 04/2007

